

Office 365 Web Add-Ins

For Absolute Office 365 Customization and Productivity.



Cognitive Convergence

<http://www.Cognitiveconvergence.Com>

+1 4242530744

shahzad@cognitiveconvergence.com





ABOUT US

Cognitive Convergence is Subject Matter Expert in Office 365, Dynamics 365, SharePoint, Project Server, SAAS, Power Platform: Power Apps-Power BI-Power Automate-Power Virtual Agents

Our Core Office 365 services includes the following

- ✓ Development of Office 365 Web Add-in– For Office Online and Desktop.
- ✓ Customization/Integration of third party services in Office 365 Web Add-Ins Solutions
- ✓ Business Consultancy related to Office tools development
- ✓ Office 365 Build-in Apps/Services Integration like with Microsoft Team , Stream, Yammer, etc
- ✓ Office 365 Graph Rest API Development
- ✓ Coverage include SharePoint Web Add-in, Word Web Add-in, PowerPoint Web Add-in , Excel Web Add-in, Outlook Web Add-in, Visio Web Add-in
- ✓ AppSource approval, verification, certification process by Microsoft.
- ✓ Office 365 Web Add-in – performance tuning, code review and solution architecture improvements
- ✓ Office 365 web Add-in support and maintenance

Current Location: Lahore, Pakistan

Planned Front-end Office: California/Washington States- USA

OFFICE 365 WEB ADD-IN CONSULTING SERVICE

- ✓ Solutions that extend Office applications and interact with content in Office documents
- ✓ Run in Office across multiple platforms, including Windows, Mac, iPad, and in a browser

Use the Office Add-ins platform to

- ✓ Add new functionality to Office clients
- ✓ Create new rich, interactive objects that can be embedded in Office documents

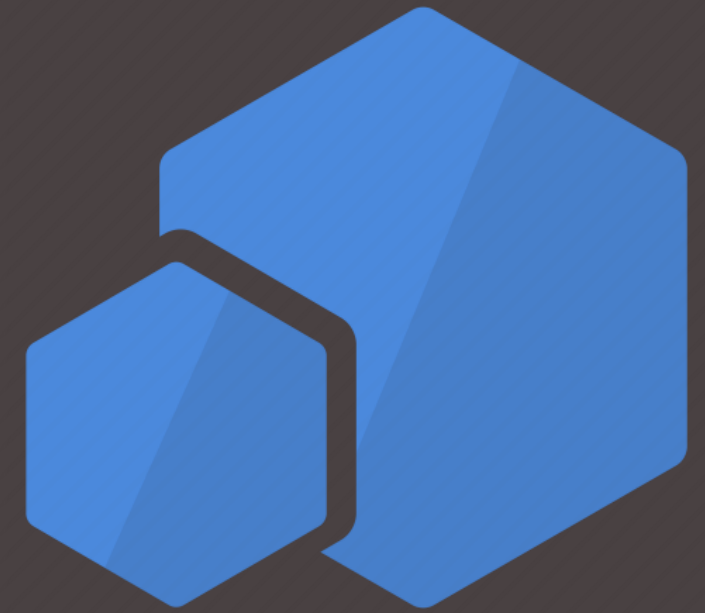


OFFICE ADD-INS VS COM AND VSTO ADD-INS

COM or VSTO add-ins are earlier Office integration solutions that run only in Office on Windows. Office Add-ins provide the following advantages over add-ins built using VBA, COM, or VSTO:

- ✓ Cross-platform support. Office Add-ins run in Office on the web, Windows, Mac, and iPad
- ✓ Centralized deployment and distribution. Admins can deploy Office Add-ins centrally across an organization
- ✓ Easy access via AppSource. Solution can be made available to a broad audience by submitting it to AppSource
- ✓ Based on standard web technology. Any library of user's liking can be used to build Office Add-ins

VSTO Add-ins



Why use Office Add-ins?

<p>Cross platform (Web, Windows, Mac, iPad)</p> 	<p>Centralized deployment and distribution</p> 	<p>Easy access via AppSource</p> 	<p>Built on standard web technologies</p> 
---	--	--	---

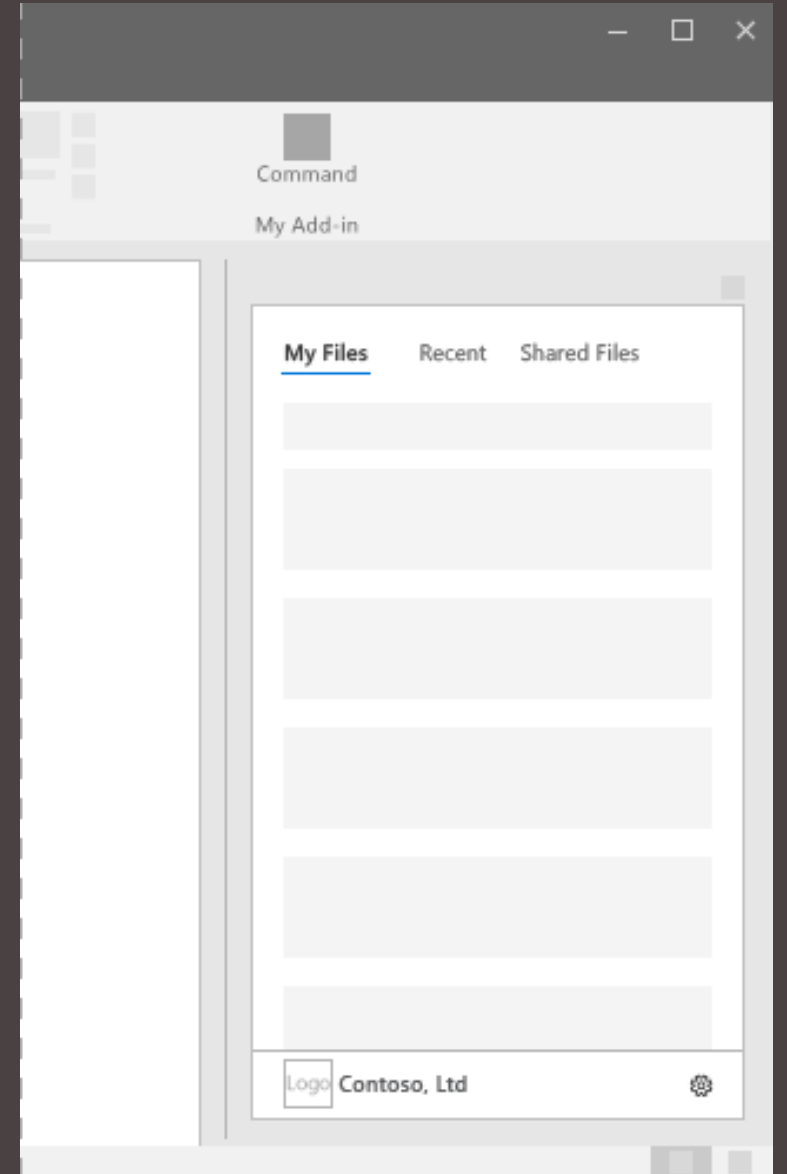
CAPABILITIES OF OFFICE 365 WEB ADD-IN

Office add-ins can

- ✓ add custom ribbon buttons or menu commands
- ✓ insert task panes
- ✓ add custom functions
- ✓ open dialog boxes
- ✓ embed rich, web-based objects such as charts or interactive visualizations

Add-in Commands

- ✓ UI elements that extend the Office UI and start actions in the add-in
- ✓ Used to add a button on the ribbon or an item to a context menu
- ✓ Help users find and use the add-in

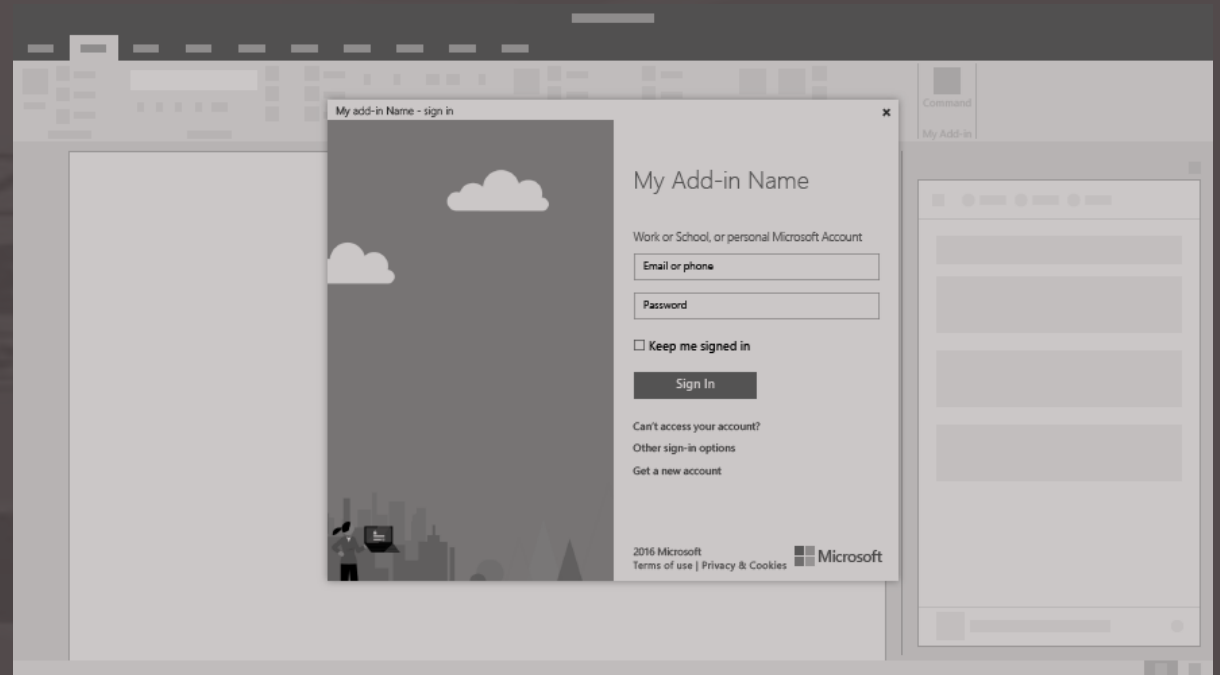


Custom Functions

- ✓ Enable developers to add new functions to Office application by defining those functions in JavaScript as part of an add-in
- ✓ Users can access custom functions just as they would any native function in Office applications

Dialog boxes

- ✓ Surfaces that float above the active Office application window
- ✓ Used to provide additional screen space for
- ✓ tasks
such as sign-in pages

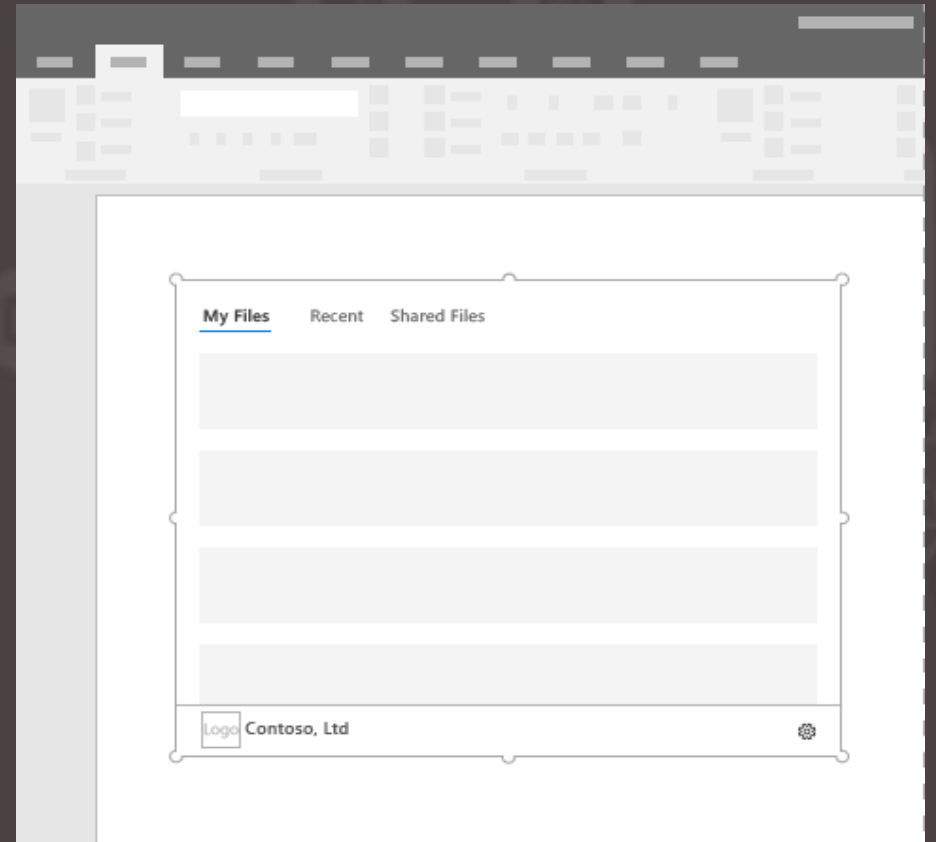


Content add-ins

- ✓ Surfaces that can be embedded directly into Excel or PowerPoint documents
- ✓ Give users access to interface controls that run code to modify documents or display data from a data source
- ✓ Used when user want to embed functionality directly into the document

Task panes

- ✓ Interface surfaces that typically appear on the right side of the window within Word, PowerPoint, Excel, and Outlook
- ✓ Give users access to interface controls that run code to modify documents or emails, or display data from a data source



Office 365 web Add-in Architecture

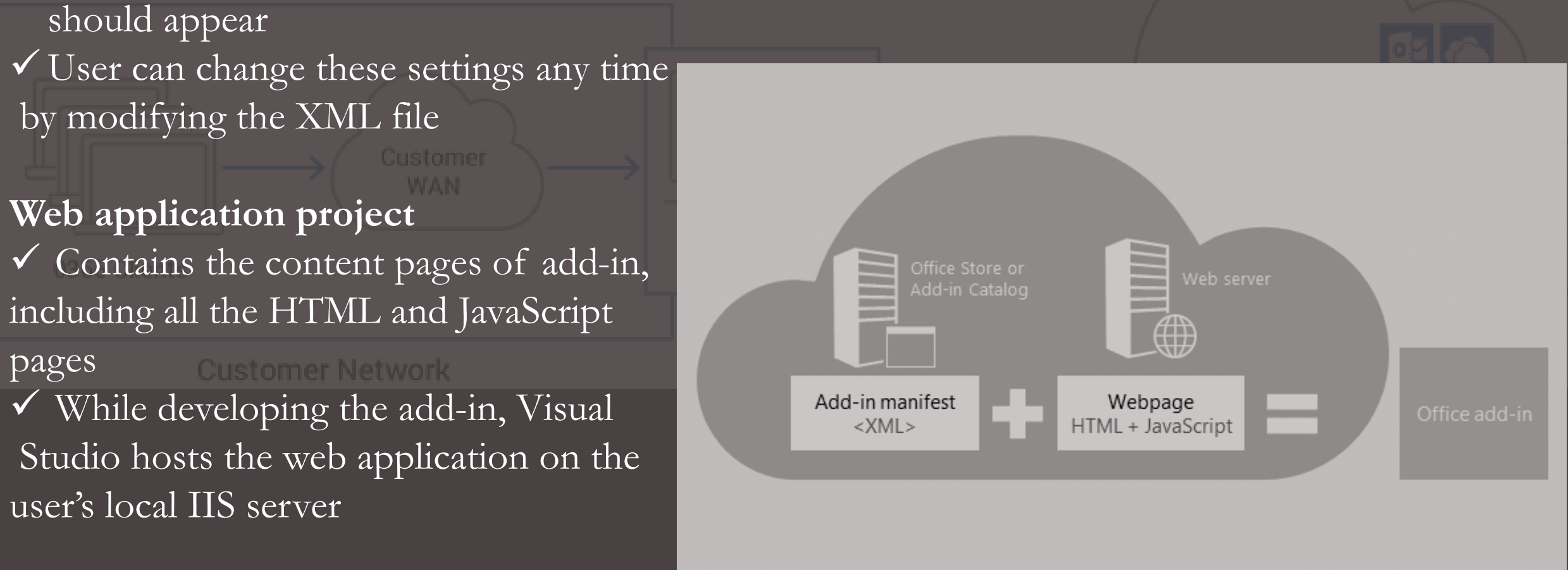
An add-in solution has two basic parts in its building architecture which are described below:

Add-in project

- ✓ Contains only an XML manifest file, which contains all the settings that describe the add-in
- ✓ Help the Office host determine when the add-in should be activated and where the add-in should appear
- ✓ User can change these settings any time by modifying the XML file

Web application project

- ✓ Contains the content pages of add-in, including all the HTML and JavaScript pages
- ✓ While developing the add-in, Visual Studio hosts the web application on the user's local IIS server



Excel Web Add-in

Extends Excel application functionality across multiple platforms including Windows, Mac, iPad, and in a browser

Excel objects programmable by Excel web add-in:

- ✓ Table, TableCollection, TableColumn, TableRow, TableStyle
- ✓ Workbook, Worksheet, PageLayout
- ✓ Application, DocumentProperties, Settings
- ✓ Chart, Image, Shape, Comment
- ✓ Functions, Filter, Range, RangeAreas



Excel JavaScript Object Model

An Excel add-in interacts with objects in Excel by using the Office JavaScript API, which includes two JavaScript object models:

Excel JavaScript API

- ✓ Application-specific APIs for Excel
- ✓ Provides strongly-typed objects that can be used to access worksheets, ranges, tables, charts, and more

Common APIs

- ✓ Used to access features such as UI, dialogs, and client settings that are common across multiple types of Office applications



PowerPoint Web Add-in

Used to build engaging solutions for users' presentations across platforms including Windows, iPad, Mac, and in a browser

PowerPoint objects programable by PowerPoint web add-in:

- ✓ Application
- ✓ Presentation
- ✓ Slide, SlideCollection
- ✓ RequestContext

PowerPoint JavaScript Object Model

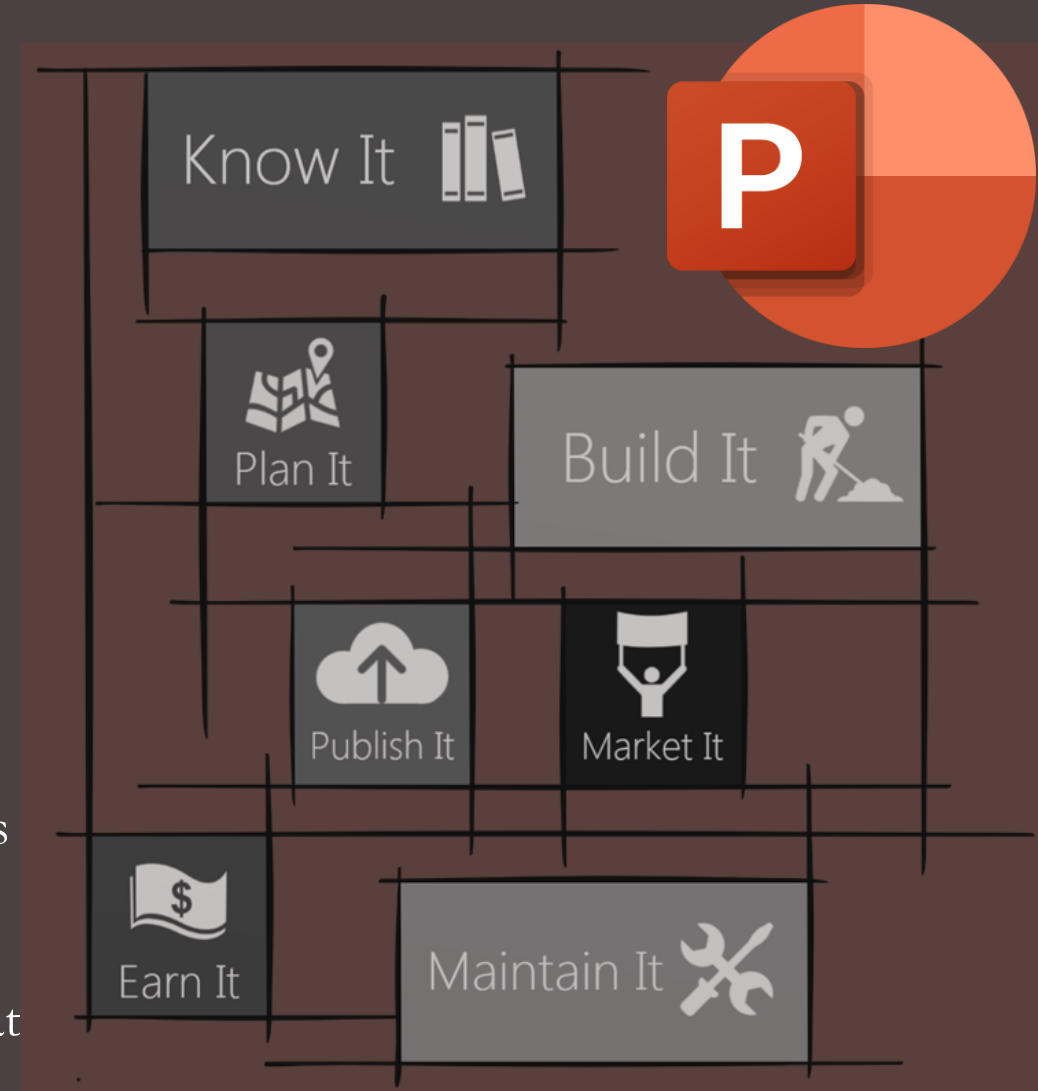
A PowerPoint add-in interacts with objects in PowerPoint by using the Office JavaScript API, which includes two JavaScript object models

PowerPoint JavaScript API

- ✓ Application-specific APIs for PowerPoint
- ✓ Provides strongly-typed objects that can be used to access objects in PowerPoint

Common APIs

- ✓ Used to access features such as UI, dialogs, and client settings that are common across multiple types of Office applications



Word Web Add-in

Includes the Word JavaScript API and the Office JavaScript API to extend Word clients running on a Windows desktop, on a Mac, or in the cloud

Word objects programable by Word web add-in:

- ✓ Application, Document, Body
- ✓ Paragraph, Section, Range, ContentControl
- ✓ Setting, RequestContext, SerachOptions
- ✓ Table, TableBorder, TableCell, TableRow

Word JavaScript Object Model

A Word add-in interacts with objects in Word by using the Office JavaScript API, which includes two JavaScript object models:

Word JavaScript API

- ✓ Application-specific APIs for Word
- ✓ Provides strongly-typed objects that can be used to access objects and metadata in a Word document

Common APIs

- ✓ Used to access features such as UI, dialogs, and client settings that are common across multiple types of Office application



Outlook Web Add-in

✓ Integrations built by third parties into Outlook by using web-based platform

The Outlook items that support add-ins include:

✓ Email messages, Meeting requests, Appointments, Responses and cancellations

Outlook objects programmable by Outlook web add-in:

✓ Appointment, Contact, User Profile, Location

✓ Mailbox, Categories, Notification, Recipients

✓ Message, Sender, Recipient, Subject, Body, Attachment

Extension Points

✓ Extension points are the ways that add-ins integrate with Outlook

The following are the ways this can be done:

✓ An add-in with command buttons on the ribbon

✓ A contextual add-in for a highlighted entity (an address)

✓ To use APIs in Outlook add-in, followings must be specified:

✓ Location of the Office.js library, Requirement set, Schema, Permissions

✓ Office JavaScript APIs exposed through the Mailbox object can be used primarily.



OFFICE 365 WEB ADD-IN DEPLOYMENT

There are multiple methods of deploying an add-in solution. Any one from listed below methods can be used to deploy the Office Add-in for testing or distribution to users.

DEPLOY AND PUBLISH OFFICE ADD-INS

Method	Use...
Sideload	To test add-in running on Windows, iPad, Mac, or in a browser. (Not for production add-ins.)
Network share	To test add-in running on Windows after add-in is published to a server other than localhost. (Not for production add-ins or for testing on iPad, Mac, or the web.)
Centralized Deployment	In a cloud deployment, to distribute add-in to users in the organization by using the Microsoft 365 admin centre.
SharePoint catalog	In an on-premises environment, to distribute the add-in to users in the organization.
AppSource	To distribute the add-in publicly to users.
Exchange server	In an on-premises or online environment, to distribute Outlook add-ins to users.

Office 365 development, implementation, customization, and consultation service of **Cognitive Convergence** offers strategic opportunities to clients, investors, and partners that is

- ✓ Unique and industry defining
- ✓ Mutual interest centric business approach
- ✓ Significantly enhance company's footprint
- ✓ Turn grow revenues by entering into new and exciting **Technology Domains, App development ideas, Solution Development, and Joint venture projects**
- ✓ 1st mover advantage with
 - ✓ Talent: 100%
 - ✓ Timing:100%
 - ✓ Technology: 100%
 - ✓ Technique: 100%

For questions or queries, contact us, we will be sure to get back to you as soon as possible.

THANK YOU



Shahzad Sarwar



Website

www.cognitiveconvergence.com



Email

shahzad@cognitiveconvergence.com



Phone

+1 4242530744